

Freezer Web Access

Working with samples



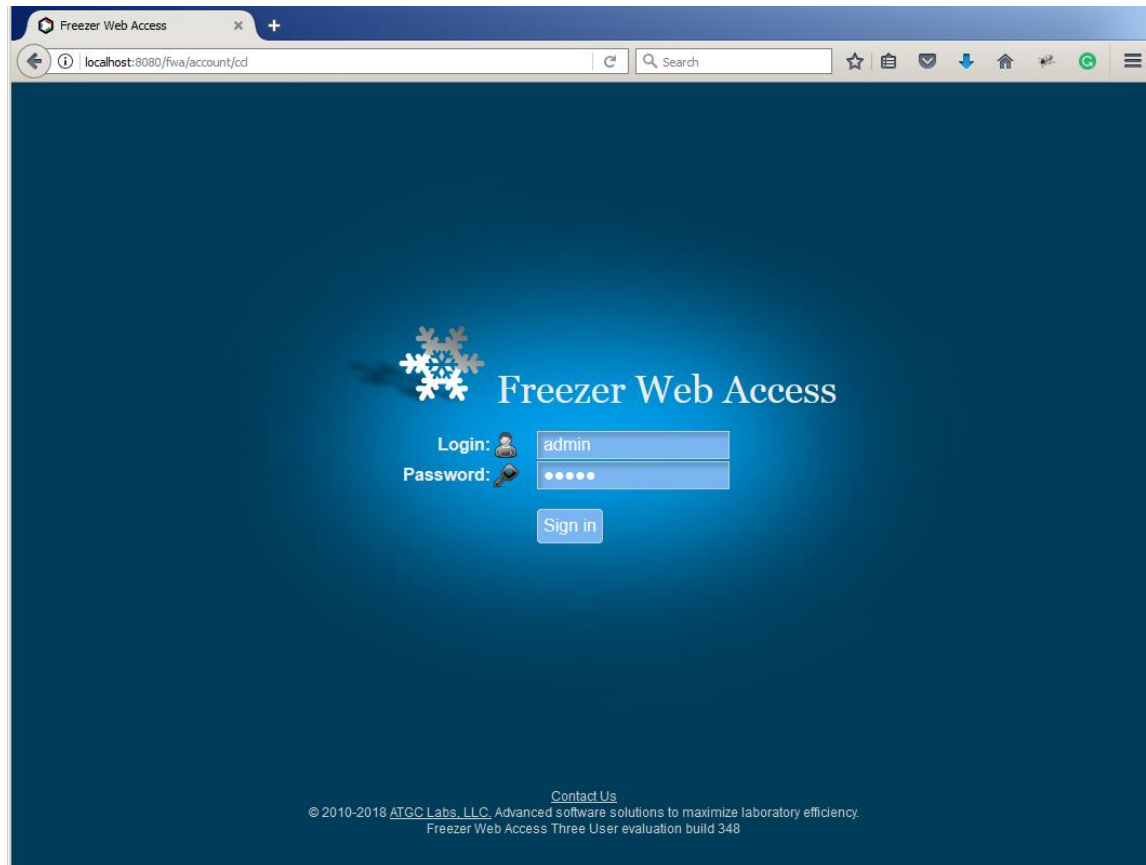
Scenario #1: Adding new samples

A technician in the lab freezes twelve aliquots from cell line A, puts them in the first row of a box (e.g. 8x12), and scans the box. She then names the box "Box1".

She annotates these new samples with all the metadata into a form-like environment of Freezer Web Access.

She also tells the system where she is putting this box (freezer and rack).

The Freezer Web Access system automatically adds this information to the samples as well, and updates the "Freezer" section (where one can visually look for samples, to find a new box in the designated freezer and rack named "Box1").



When logging in for the first time, login name and password for the default administrator login are both **admin**.

Freezer Web Access

localhost:8080/fwa/batches?type=3&menuPage=0

Freezer Web Access Demo Site Dashboard Requests & QC Cell Culture Configuration Help Sign Out

Calendar Add Batch Add Samples **Batches** Freezers Kits Search Removal Logs More Barcode or Terms

Track cell line lineage [Show/Hide columns](#)

Select Batch

	Project	Catalog Num	Batch	Parent Batch	QC Requir	Sample Type	Technician	Date	Documen	Total Vial	Remainin	Shipped
	<input type="text"/>	<input type="text"/>	<input type="text"/>	<input type="text"/>	All	All	All	<input type="text"/>				
1	Kir2.1-CHO	CT4127	1177		No	Customer Cell	Admin	2013-03-10 18	0	64	63	1
2	Bombesin 2 (G A694		1506	869	No	Customer Cell	Admin	2013-03-10 18	0	120	108	12
3	Bombesin 2 (G A694		869		No	Customer Cell	Admin	2013-03-10 17	0	40	40	0
4	Nicotinic a3/b4	CT4021	1150		No	Customer Cell	Admin	2013-03-10 17	0	100	0	100

View + Add Edit Reset Vials Transfer Alerts Notifications Documents Tree Validation Export Barcodes View 1 - 4 of 4

[Conditions of Use](#) [Privacy Policy](#) [Contact Us](#)

© 2010-2018 ATGC Labs, LLC. Advanced software solutions to maximize laboratory efficiency.
Freezer Web Access Three User evaluation build 348

You are redirected to the Batches tab after logging in.

Freezer Web Access

localhost:8080/fwa/samplesbatch?type=1&menuPage=0

Freezer Web Access Demo Site Dashboard Requests & QC Cell Culture Configuration Help Sign Out

Calendar Add Batch Add Samples Batches Freezers Kits Search Removal Logs More Barcode, Terms or Box

Fill out Batch Information

Project * Start typing, the program will autocomplete the field

Catalog Number *

Batch * An incremented value for the last numeric Batch

Parent Batch

QC Required

Attach File

Sample Type *

Private

Volume Unit of measurement

Threshold Expiration date

Fields marked with (*) are required

Import unique sample ID

Upload Excel spreadsheet or text file from 2D barcode scanner

and select a box in Select Container section

File format:
Rack: comment in the first line
A01,01234567
B01,01234568
C01,No Tube

Samples may be added in a sample by sample manner or in batches (in cases where there are numerous identical samples). Perform the steps below to submit a new sample batch. Open the Add Batch tab.

Freezer Web Access

localhost:8080/fwa/samplesbatch?type=1&menuPage=0

Freezer Web Access Demo Site Dashboard Requests & QC Cell Culture Configuration Help Sign Out

Calendar Add Batch Add Samples Batches Freezers Kits Search Removal Logs More Barcode, Terms or Box

Fill out Batch Information

Project * Kir2.1-CHO Start typing, the program will autocomplete the field

Catalog Number * CT4127

Batch * 1178 An incremented value for the last numeric Batch

Parent Batch

QC Required No

Attach File

Sample Type * Customer Cell Lines

Freeze date 2018-12-15

Final Passage number

Target Family CNG Target Family

Detachment Solution

Freezing Media

IC Validation ☒ Barracuda ☐ FLIPR ☐ Manual ☐ None ☐ PatchX ☐ QPatch ☐ Quattro

GPCR Validation ☐ Binding ☐ Calcium ☐ cAMP ☐ CNG ☐ None

Parental Cell Line ☐ 1321N1 ☐ CHO ☐ CHO-T(Rex) ☐ HEK ☐ HEK-T(Rex) ☐ RH7777

Vector

Private No

Volume Unit of measurement

Threshold Expiration date

In Fill out Batch Information section, type in Cell Line/Project, Catalog Number, Batch, Parent Batch, if present, and select a Sample Type. Fill out custom fields.

Freezer Web Access

localhost:8080/fwa/samplesbatch?type=1&menuPage=0


Private

Volume Unit of measurement

Threshold Expiration date

Fields marked with (*) are required

Import unique sample ID

Upload Excel spreadsheet or text file from 2D barcode scanner 

and select a box in Select Container section

File format:
 Rack: comment in the first line
 A01,01234567
 B01,01234568
 C01,No Tube

Vial Placement

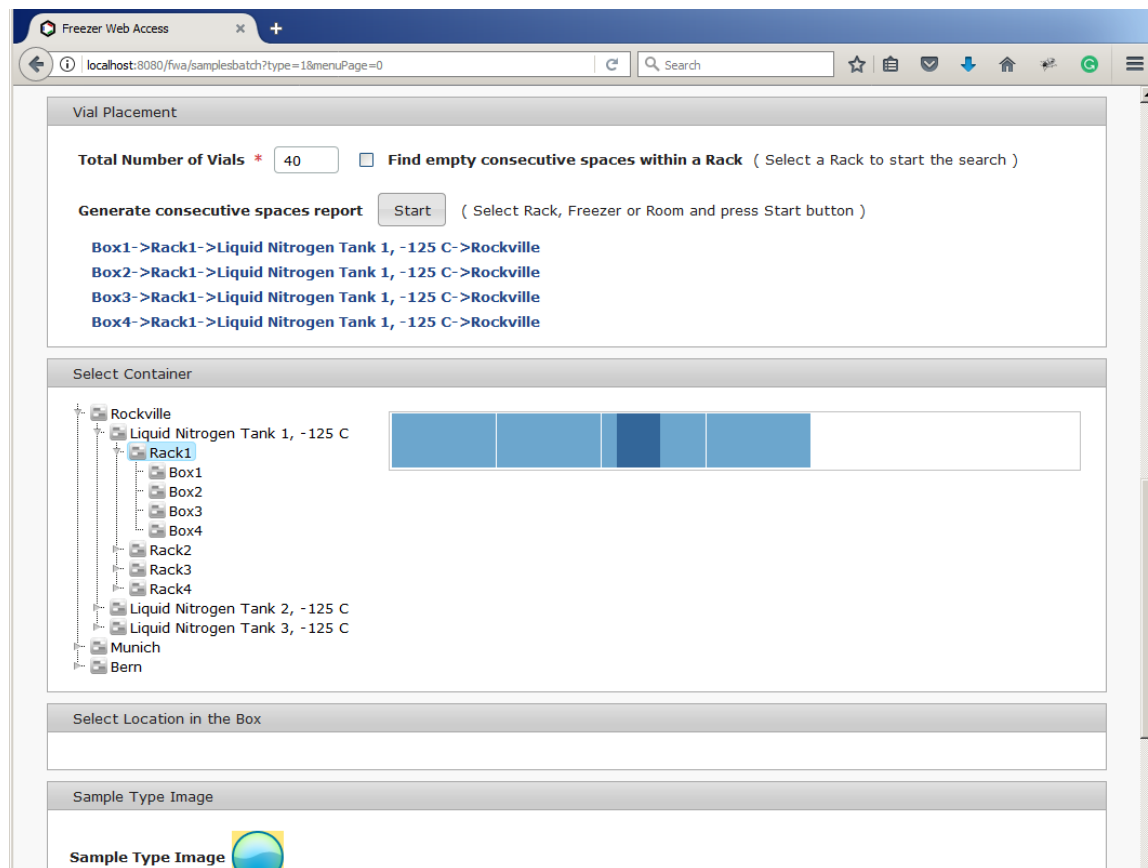
Total Number of Vials * ☐ Find empty consecutive spaces within a Rack (Select a Rack to start the search)

Generate consecutive spaces report (Select Rack, Freezer or Room and press Start button)

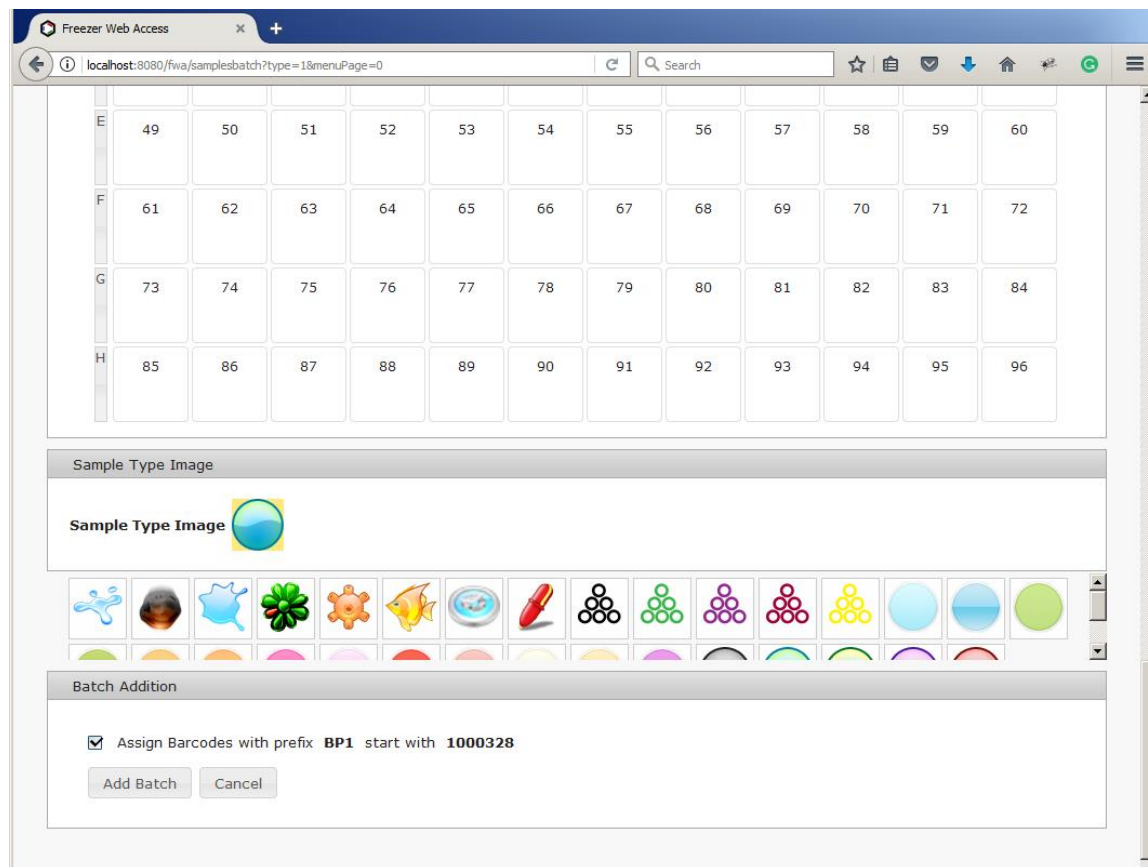
Select Container

- Rockville
 - Liquid Nitrogen Tank 1, -125 C
 - Rack1
 - Box1
 - Box2
 - Box3
 - Box4
 - Rack2
 - Rack3
 - Rack4

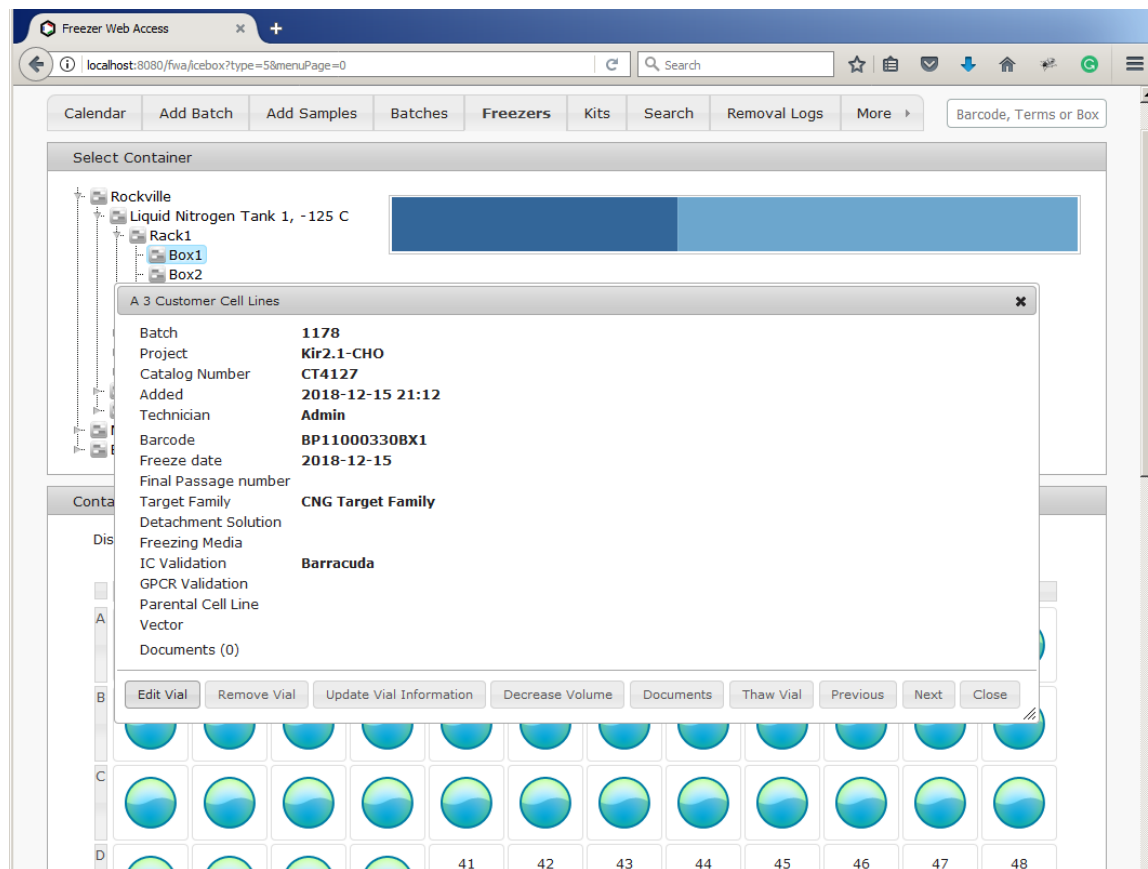
Upload a text file from 2D barcode scanner in Import 2D barcode section. In the Select Container section navigate a freezer, open a rack and select a box or a plate.



The system can generate consecutive spaces report. In Select Container section, select a rack or a freezer. In Vial Placement section press the Start button. The system finds empty boxes or plates.



Scroll down the page. In the Sample Type Image section use predefined Sample Type image or select another image. In Batch Addition section, press Add Batch button.



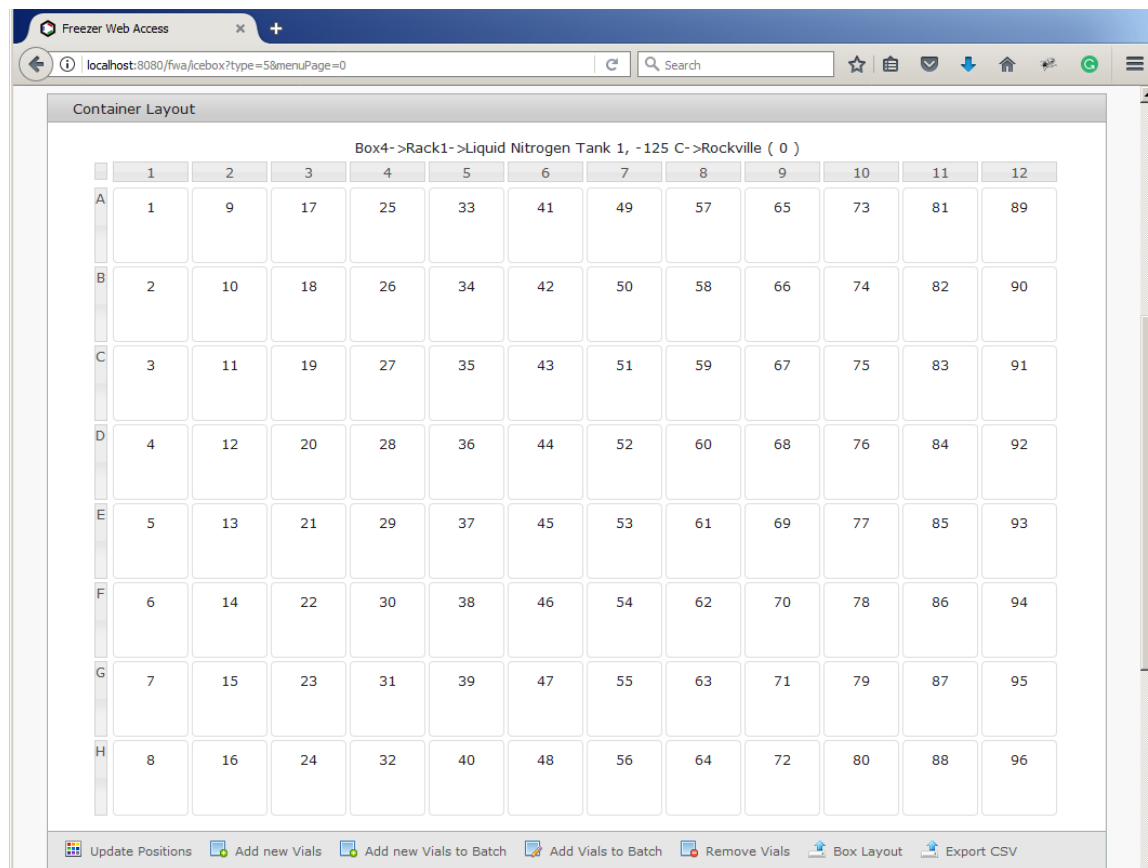
Open the Freezers tab. The system added samples. Select a vial with the mouse click. Move or resize Sample Information window to let you view different vials as you select vials with the mouse.

The screenshot shows the 'Freezer Web Access' application interface. The top navigation bar includes 'Demo Site', 'Dashboard', 'Requests & QC', 'Cell Culture', 'Configuration', 'Help', and 'Sign Out'. The 'Settings' tab is selected, and the 'More' button is visible. The 'Personal Settings' section contains fields for Login (admin), Screen name (Admin), Email, Phone, and Location, along with a 'Change Password' link. The 'Automatically allocate samples in the batch' section has two radio buttons: 'Vial position top-down' (selected) and 'Vial position left to right'. The 'Display vial information columns' section has a checked checkbox for 'Display in the grid'. Below this is a 'Select Site' table with two rows: 'Demo Site' and 'Test Site'. The 'Select Bookmark' table is empty.

Name	Description	Site Access Group
1 Demo Site	Freezer WEB Access Demo	Administrator
2 Test	Test Site	Administrator

Location	Box	Comment	Added
----------	-----	---------	-------

A user can set successive vial numbers to go top-down or left to right in the Container Layout section. Select the Settings tab, you may need to press More tab button to open more tabs. Select Vial position top-down or Vial position left to right option. The system saves changes.



Open the Freezers tab and select a box or a plate. The system numbers wells in a box using selected option. This is a user specific setting.

Freezer Web Access

localhost:8080/fwa/icebox?type=58menuPage=0

Container Layout

Box4->Rack1->Liquid Nitrogen Tank 1, -125 C->Rockville (0)

	1	2	3	4	5	6	7	8	9	10	11	12
A	1	9	17	25	33	41	49	57	65	73	81	89
B	2	10	18	26	34	42	50	58	66	74	82	90
C	3	11	19	27	35	43	51	59	67	75	83	91
D	4	12	20	28	36	44	52	60	68	76	84	92
E	5	13	21	29	37	45	53	61	69	77	85	93
F	6	14	22	30	38	46	54	62	70	78	86	94
G	7	15	23	31	39	47	55	63	71	79	87	95
H	8	16	24	32	40	48	56	64	72	80	88	96

Update Positions Add new Vials Add new Vials to Batch Add Vials to Batch Remove Vials Box Layout Export CSV

Select multiple wells by dragging a plate with the mouse over the locations. Also, locations can be selected by click or drag while holding the Ctrl key, allowing for multiple (non-contiguous) selections.

Freezer Web Access

localhost:8080/fwa/icebox?type=5&menuPage=0

Container Layout

Box1 -> Back1 -> Liquid Nitrogen Tank 1 -> 125 C -> Backville (A)

Add new Vials

Project * Start typing, the program will autocomplete the field

Sample Type * Customer Cell Lines

Freeze date 2018-12-15

Final Passage number

Target Family CNG Target Family

Detachment Solution


Freezing Media

IC Validation ☒ Barracuda ☐ FLIPR ☐ Manual ☐ None ☐ PatchX ☐ QPatch ☐ Quattro

GPCR Validation ☐ Binding ☐ Calcium ☐ cAMP ☐ CNG ☐ None

Parental Cell Line ☐ 1321N1 ☐ CHO ☐ CHO-T(Rex) ☐ HEK ☐ HEK-T(Rex) ☐ RH7777

Vector



Private No

Volume **Unit of measurement**

Threshold **Expiration date**

Fields marked with (*) are required

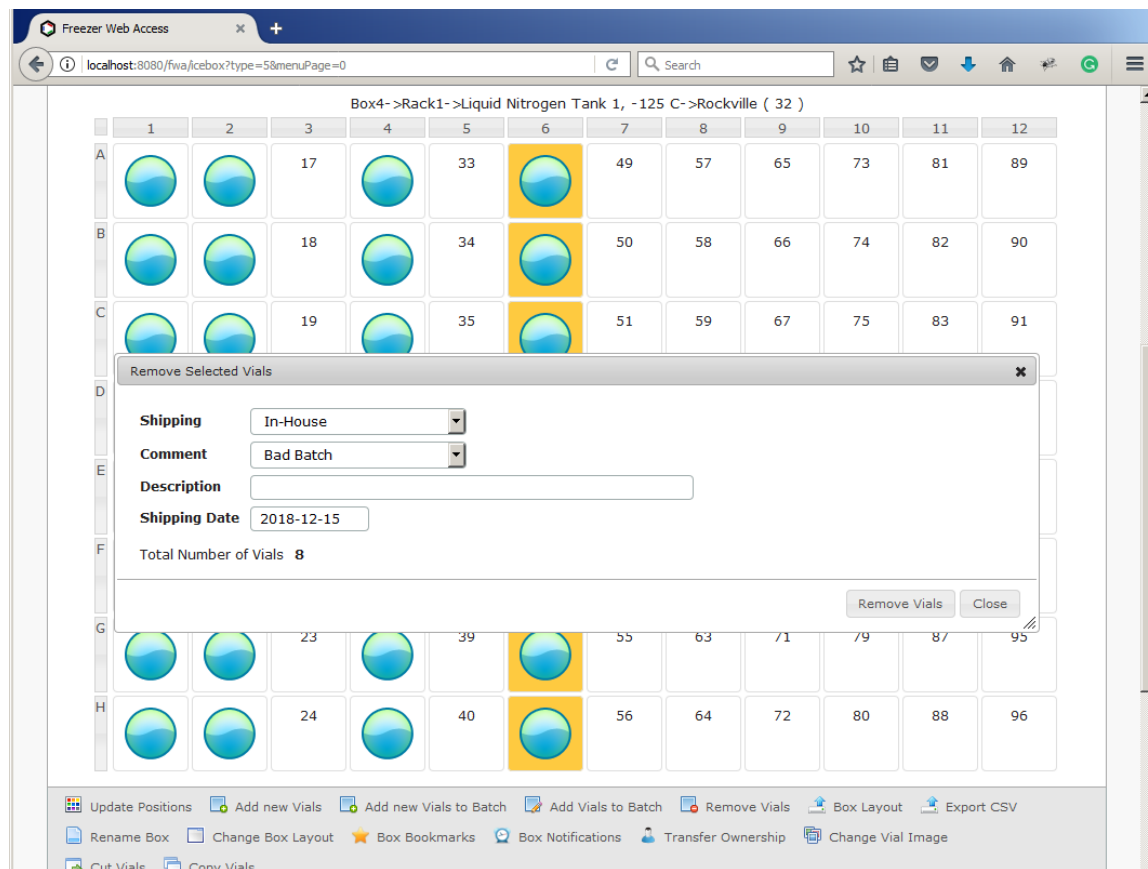
Total Number of Vials 32

☒ Assign Barcodes with prefix BP1 start with 1000368

Update

Add Vials Close

Select Add new Vials image to add samples. Fill out sample information and select a Sample Type. Press Add Vials button. The system adds new samples.



Select vials in the Container Layout section. In the navigation bar press Remove Vials image. Select vial removal: In-House or Shipping. Select a comment and type a description. Select Shipping Date. Press Remove Vials button. Open the Removal Log tab.

The next day the technician freezes another twelve aliquots from cell line A.

Since it is being used for the same batch, she puts them in the second row of Box1, and scans the whole box.

The Freezer Web Access system recognizes that the barcoded tubes in row 1 of the box have already been added to the database. The system uses the metadata for the samples in the first row.


Freezer Web Access

localhost:8080/fwa/samplesbatch?type=1&menuPage=0

Freezer Web Access Demo Site Dashboard Requests & QC Cell Culture Configuration Help Sign Out

Calendar Add Batch Add Samples Batches Freezers Kits Search Removal Logs More Barcode, Terms or Box

Fill out Batch Information

Batch * 1178  An incremented value for the last numeric Batch

Project Kir2.1-CHO

Catalog Number CT4127

Parent Batch


Private No

Volume Unit of measurement

Threshold Expiration date

Fields marked with (*) are required

Import unique sample ID

Upload Excel spreadsheet or text file from 2D barcode scanner 

and select a box in Select Container section

File format:

Rack: comment in the first line

A01,01234567

B01,01234568

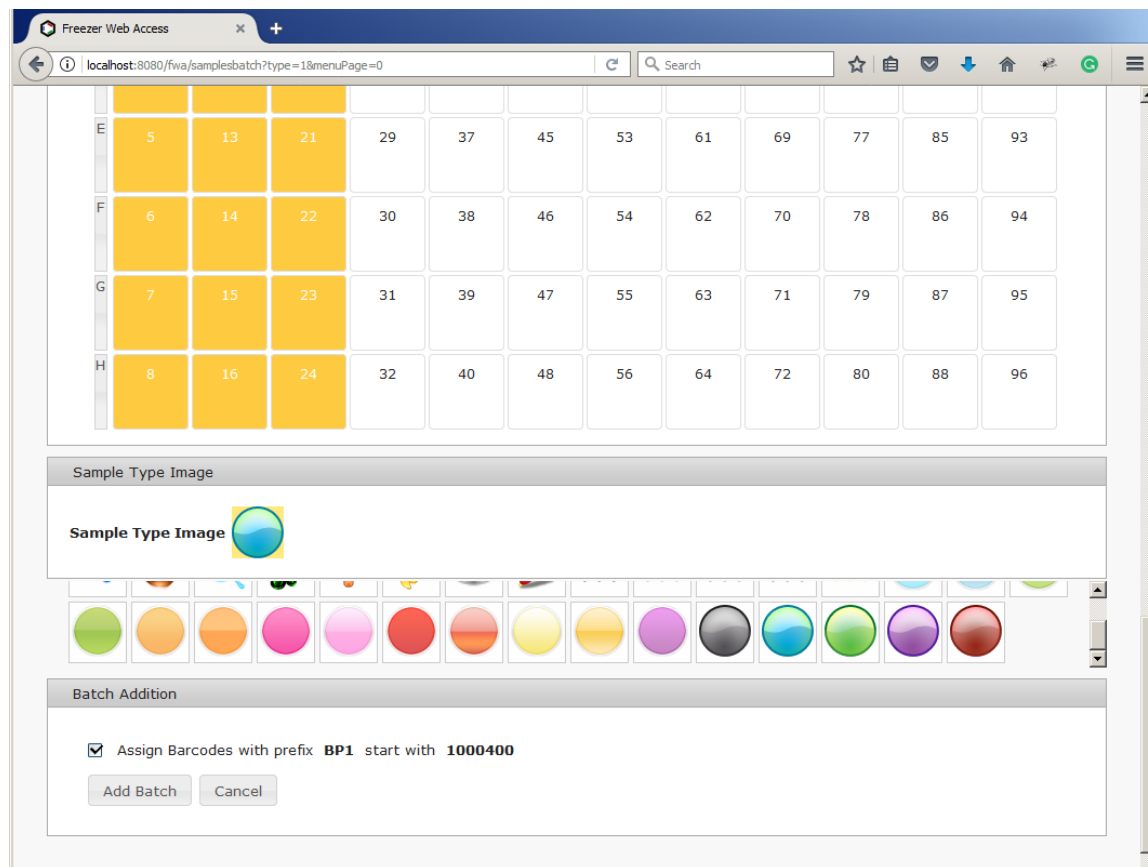
C01,No Tube

Vial Placement

Total Number of Vials * 24 ☐ Find empty consecutive spaces within a Rack (Select a Rack to start the search)

Generate consecutive spaces report Start (Select Rack, Freezer or Room and press Start button)

Open the Add Batch tab. In Fill out Batch Information section fill out the Batch field and press Find Batch image. The system finds batch information. Upload a text file from 2D barcode scanner and select a box.



Scroll down the page. Press Add Batch Button.

Freezer Web Access

localhost:8080/fwa/icebox?type=5&menuPage=0

Box2 -> Rack1 -> Liquid Nitrogen Tank 1, -125 C -> Rockville (24)

	1	2	3	4	5	6	7	8	9	10	11	12
A				25	33	41	49	57	65	73	81	89
B				26	34	42	50	58	66	74	82	90
C						43	51	59	67	75	83	91
D						44	52	60	68	76	84	92
E						45	53	61	69	77	85	93
F				30	38	46	54	62	70	78	86	94
G				31	39	47	55	63	71	79	87	95
H				32	40	48	56	64	72	80	88	96

Batch 1178

Project Kir2.1-CHO

Catalog Number CT4127

Sample Type Customer Cell Lines

Technician Admin

Date 2018-12-15 21:26

Barcode BP11000417BX1

Update Positions Add new Vials Add new Vials to Batch Add Vials to Batch Remove Vials Box Layout Export CSV

Rename Box Change Box Layout Box Bookmarks Box Notifications Transfer Ownership Change Vial Image

Open the Freezers tab. The box "Box1" has 24 samples. Move a mouse over a vial. The system opens a popup window.

Scenario #2: A box is dropped!

After removing a sample from a box, the technician drops the box on the floor and all the tubes scatter.

She quickly gathers them up and places them randomly back into the box.

She scans them and Freezer Web Access updates the new positions of all the tubes within the box.


Freezer Web Access

localhost:8080/fwa/samplesbatch?type=1&menuPage=0

Freezer Web Access Demo Site Dashboard Requests & QC Cell Culture Configuration Help Sign Out

Calendar Add Batch Add Samples Batches Freezers Kits Search Removal Logs More Barcode, Terms or Box

Fill out Batch Information

Batch * 1178  An incremented value for the last numeric Batch

Project Kir2.1-CHO

Catalog Number CT4127

Parent Batch


Private No

Volume Unit of measurement

Threshold Expiration date

Fields marked with (*) are required

Import unique sample ID

Upload Excel spreadsheet or text file from 2D barcode scanner 

and select a box in Select Container section

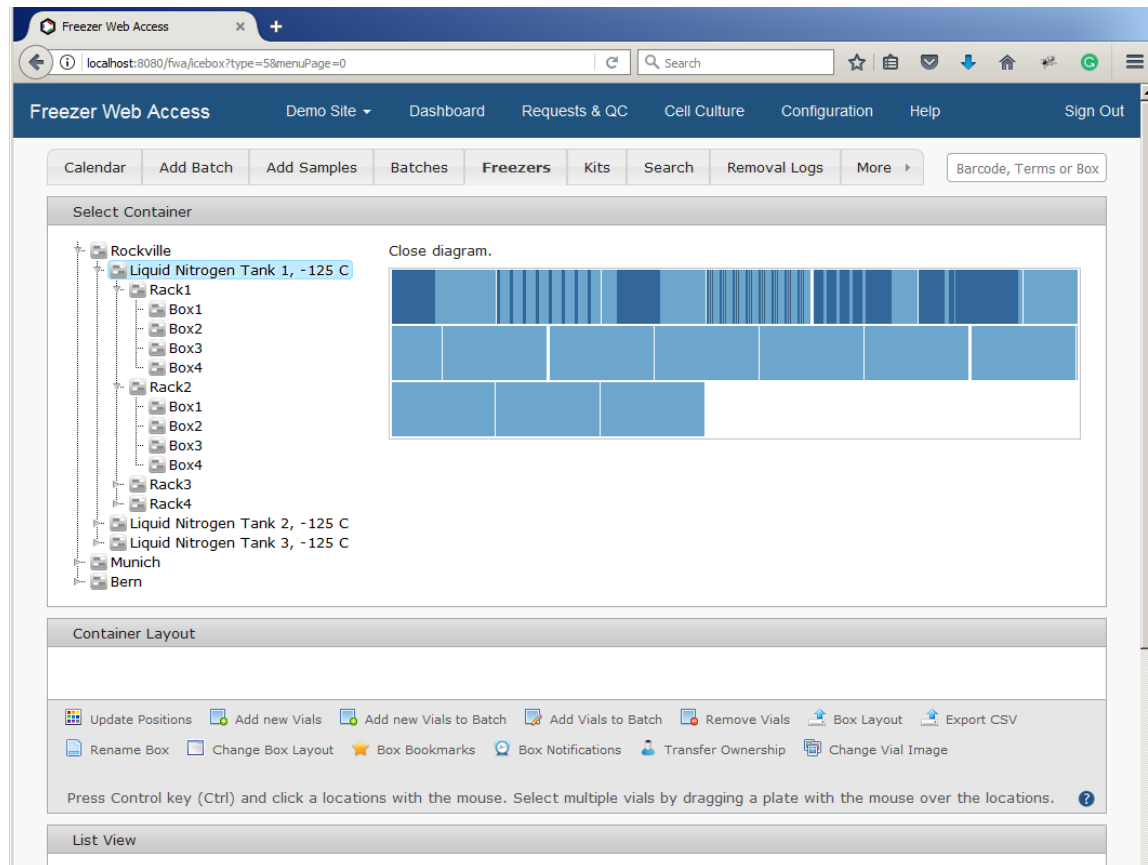
File format:
Rack: comment in the first line
A01,01234567
B01,01234568
C01,No Tube

Vial Placement

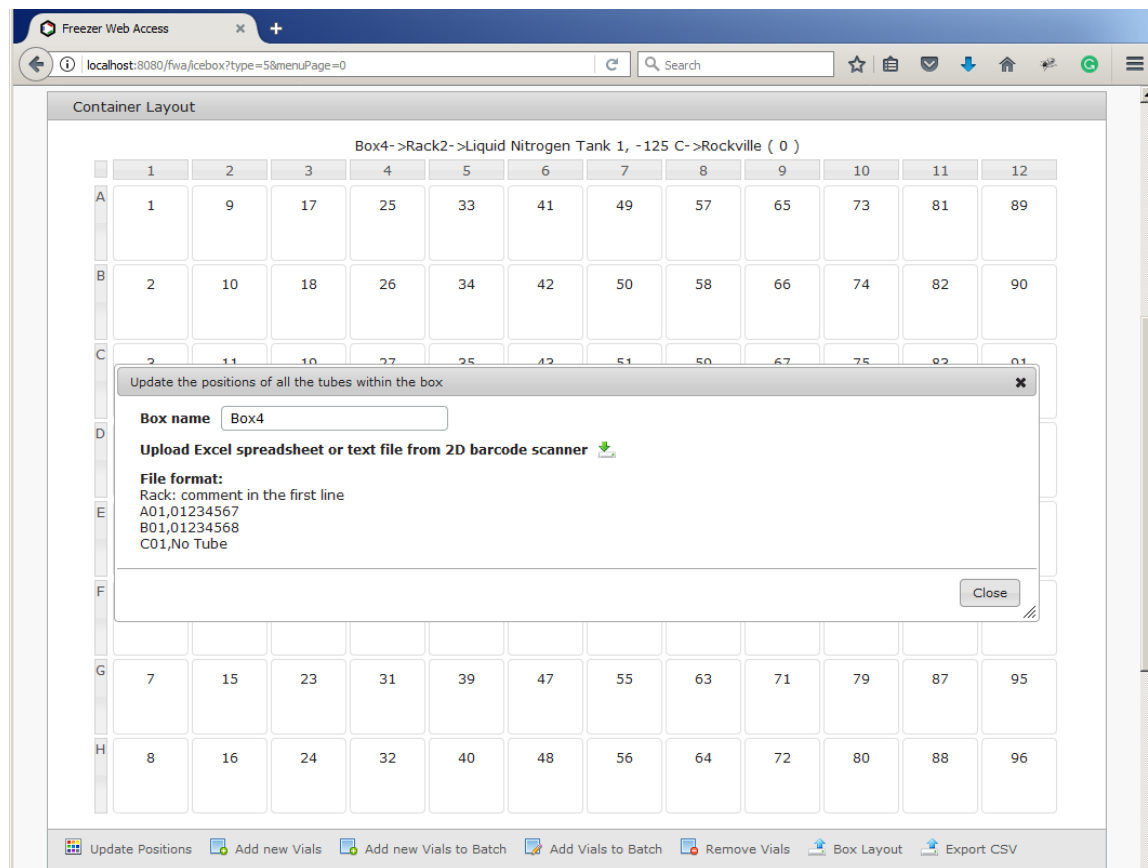
Total Number of Vials * ☐ Find empty consecutive spaces within a Rack (Select a Rack to start the search)

Generate consecutive spaces report (Select Rack, Freezer or Room and press Start button)

Open the Add Batch tab. In Fill out Batch Information section fill out the Batch field and press Find Batch image. The system finds batch information. Upload a text file from 2D barcode scanner and select a box. Scroll down the page. Press Add Batch Button. The system updates the new positions.



The user can update the new positions of all the tubes within the box. Open Freezers tab. In Select Container section navigate freezers using container layout. Filled spaces have dark blue color and empty spaces have light blue color, select empty space with a mouse click.



In Container Layout section press Update Positions image. The system opens Update the positions of all the tubes within the box window. Press Upload Excel spreadsheet or text file from 2D barcode scanner image and select a file. The system updates the new positions of all the tubes within the box.

Scenario #3: Searching for samples

A technician needs to extract RNA from multiple samples that are located in multiple different boxes. She logs onto the Freezer Web Access system and searches for the necessary samples. She has multiple search options.

First, she can type some terms into a free form box that will search all the fields of all the entries and return the results.

Second, she can specify specific parameters for as many fields as she thinks will be necessary to return only the needed samples.

She can then easily export these results to a file (e.g. csv) and print them out for when she goes to the freezer.

Furthermore, if she often makes similar searches, she can save the search under a specific name and easily reload these search parameters at a later time.

Freezer Web Access

localhost:8080/fwa/reports?type=9&menuPage=0

Search

Fill out search parameters

Location Batch Date range

Project Catalog Number Number of samples

Any Field Technician Barcode range

Shipping Comment Shipping Date range

Sample Type

☐ Freeze date

☐ Final Passage number

☐ Target Family

☐ Detachment Solution

☐ Freezing Media

☐ IC Validation ☒ Barracuda ☐ FLIPR ☐ Manual ☐ None ☐ PatchX ☐ QPatch ☐ Quattro

☐ GPCR Validation ☐ Binding ☐ Calcium ☐ cAMP ☐ CNG ☐ None

☐ Parental Cell Line ☐ 1321N1 ☐ CHO ☐ CHO-T(Rex) ☐ HEK ☐ HEK-T(Rex) ☐ RH7777

☐ Vector

Saved Search Queries

☐ Show expired vials or vials that have volume less than threshold value.

Validation Platforms

Show/Hide columns

Search Export Quick Inventory Cancel

Open the Search tab. Freezer Web Access tracks the locations of all samples so that anyone in the lab can easily find a needed sample, even if the person that created the sample left the lab years ago.

Freezer Web Access

localhost:8080/fwa/reports?type=9&menuPage=0

Search

Fill out search parameters

Location Batch Date range

Project Catalog Number Number of samples

Any Field Technician Barcode range

Shipping Comment Shipping Date range

Sample Type

☐ Freeze date

☐ Final Passage number

☐ Target Family

☐ Detachment Solution

☐ Freezing Media

☐ IC Validation ☒ Barracuda ☐ FLIPR ☐ Manual ☐ None ☐ PatchX ☐ QPatch ☐ Quattro

☐ GPCR Validation ☐ Binding ☐ Calcium ☐ cAMP ☐ CNG ☐ None

☐ Parental Cell Line ☐ 1321N1 ☐ CHO ☐ CHO-T(Rex) ☐ HEK ☐ HEK-T(Rex) ☐ RH7777

☐ Vector

Saved Search Queries

☐ Show expired vials or vials that have volume less than threshold value.

Validation Platforms

Show/Hide columns

The user can narrow down a selection by adding search criteria from the text fields and pop-up menu. Batch, Project and Catalog Number fields provide autocomplete suggestions.

Freezer Web Access

localhost:8080/fwa/reports?type=9&menuPage=0

Search

☒ IC Validation
 ☐ GPCR Validation
 ☐ Parental Cell Line
 ☐ Vector

☒ Barracuda
 ☐ FLIPR
 ☐ Manual
 ☐ None
 ☐ PatchX
 ☐ QPatch
 ☐ Quattro

☐ Binding
 ☐ Calcium
 ☐ cAMP
 ☐ CNG
 ☐ None

☐ 1321N1
 ☐ CHO
 ☐ CHO-T(Rex)
 ☐ HEK
 ☐ HEK-T(Rex)
 ☐ RH7777

Saved Search Queries

Name	Batch	Project	Catalog Number	Added
No records to view				

Remove Search Query

Search Name

Save Search

☐ Show expired vials or vials that have volume less than threshold value.

Validation Platforms

Show/Hide columns

The user can save similar searches under a specific name and easily reload these search parameters at a later time.

Freezer Web Access

localhost:8080/fwa/reports?type=9&menuPage=0

☐ Parental Cell Line
 ☐ 1321N1
 ☐ CHO
 ☐ CHO-T(Rex)
 ☐ HEK
 ☐ HEK-T(Rex)
 ☐ RH7777

☐ Vector

Saved Search Queries

☐ Show expired vials or vials that have volume less than threshold value.

Validation Platforms

Show/Hide columns

Select Vial

	Local	Box	I	C	D	Barco	Proje	Cata	Batcl	Pare	Samj	Kit	Tech
1						0	BP11	Nicoti	CT40:1150		Custo	0	Admir
2						0	BP11	Nicoti	CT40:1150		Custo	0	Admir
3						0	BP11	Nicoti	CT40:1150		Custo	0	Admir
4						0	BP11	Nicoti	CT40:1150		Custo	0	Admir
5						0	BP11	Nicoti	CT40:1150		Custo	0	Admir
6						0	BP11	Nicoti	CT40:1150		Custo	0	Admir
7						0	BP11	Nicoti	CT40:1150		Custo	0	Admir
8						0	BP11	Nicoti	CT40:1150		Custo	0	Admir
9						0	BP11	Nicoti	CT40:1150		Custo	0	Admir
10						0	BP11	Nicoti	CT40:1150		Custo	0	Admir
11						0	BP11	Nicoti	CT40:1150		Custo	0	Admir

View 1 - 100 of 264

[Conditions of Use](#)
[Privacy Policy](#)
[Contact Us](#)

© 2010-2018 ATGC Labs, LLC. Advanced software solutions to maximize laboratory efficiency.
 Freezer Web Access Three User evaluation build 348

Opening Search_2018-12-15.csv

You have chosen to open:

Search_2018-12-15.csv

which is: Microsoft Office Excel Comma Separated Values File
from: http://localhost:8080

What should Firefox do with this file?

☒ Open with Microsoft Office Excel (default)
 ☐ Save File

☐ Do this automatically for files like this from now on.

Press the Export button. The system exports results to a comma-separated values (CSV) file.

Scenario #4: Adding a new field

After a study has been published, the raw files generated from the sequencer were uploaded to the Sequence Read Archive (SRA).

A technician chooses the option to add a new field and names it "SRA".

She opens the batch used in the study. Freezer Web Access displays the samples in the spreadsheet-like format. She then copy pastes the URL into the SRA field for these samples.

In the future, she can add links to the "SRA" field as other projects are published.

Freezer Web Access

localhost:8080/fwa/listTypes?structuregroup_id=12&type=3

FWA Configuration Demo Site Dashboard Components Requests & QC Cell Culture Help Sign Out

Sites Containers Freezers **Sample Types** Procedures Images Settings Barcodes Users Activity Log

Manage Cell Line Groups

► Add Sample Type

▼ Customer Cell Lines (5 batches and 424 samples)

Sample Type Name Customer Cell Lines Barcode Prefix BP1 Save

Sample Type Image

Add Column
 Column Name * SRA
 Column Type String
 Column View Text
 Required ☐
 Display in the well ☐
 Submit Cancel

Fields marked with (*) are required

Column View	Required	Display in the well	Active
Text	No	No	Yes
Text	No	No	Yes
Select	No	No	Yes
Text	No	No	Yes
Text	No	No	Yes
Radio	No	No	Yes
checkbox	No	No	Yes
checkbox	No	No	Yes
Text	No	No	Yes

+ Add Column Edit Column View Column

► Customer (0 batches and 0 samples)

View 1 - 9 of 9

Conditions of Use Privacy Policy Contact Us

Select the Configuration menu at the top of the screen and open the Sample Types tab. Select Customer Cell Lines and press the Add Column button in the navigation bar. Type SRA name and press Submit button.

Freezer Web Access

localhost:8080/fwa/listTypes?structuregroup_id=12&type=3

FWA Configuration Demo Site Dashboard Components Requests & QC Cell Culture Help Sign Out

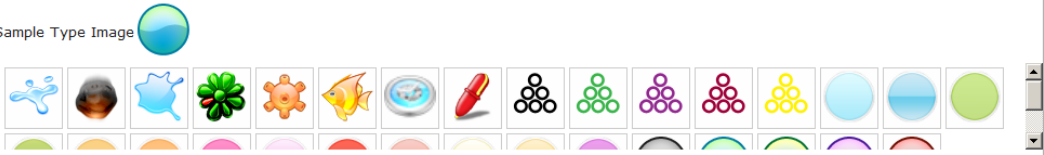
Sites Containers Freezers **Sample Types** Procedures Images Settings Barcodes Users Activity Log

Manage Cell Line Groups

► Add Sample Type

▼ Customer Cell Lines (5 batches and 424 samples)

Sample Type Name Barcode Prefix

Sample Type Image 

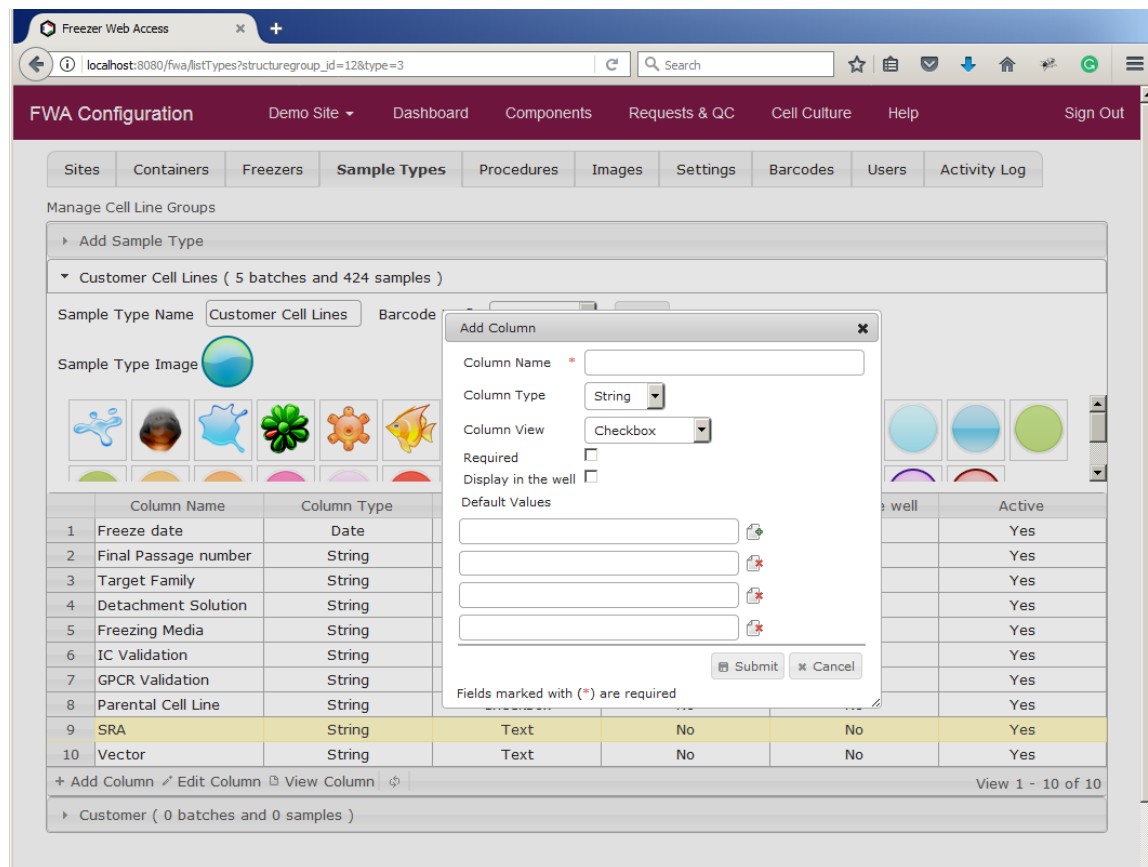
	Column Name	Column Type	Column View	Required	Display in the well	Active
1	Freeze date	Date	Text	No	No	Yes
2	Final Passage number	String	Text	No	No	Yes
3	Target Family	String	Select	No	No	Yes
4	Detachment Solution	String	Text	No	No	Yes
5	Freezing Media	String	Text	No	No	Yes
6	IC Validation	String	Radio	No	No	Yes
7	GPCR Validation	String	Checkbox	No	No	Yes
8	Parental Cell Line	String	Checkbox	No	No	Yes
9	SRA	String	Text	No	No	Yes
10	Vector	String	Text	No	No	Yes

+ Add Column Edit Column View Column

View 1 - 10 of 10

► Customer (0 batches and 0 samples)

The system adds a new sample column. Drag and drop a column to change its order. A column may have different types: String, Integer or Date, and views: Text, Select, Checkbox, Radio or AutoIncrement.



For column view Select, Checkbox or Radio a user can add multiple default values. AutoIncrement column view generates consecutive ID numbers, character sequences or character-numeric sequences.

Freezer Web Access

localhost:8080/fwa/batches?type=3&menuPage=0

Freezer Web Access Demo Site Dashboard Requests & QC Cell Culture Configuration Help Sign Out

Reset Vials Information

☐ Freeze date 2013-03-08

☐ Final Passage number P16

☐ Target Family CNG Target Family

☐ Detachment Solution Trypsin

☐ Freezing Media 90% FBS + 10% DMSO

☐ IC Validation ☒ Barracuda ☐ FLIPR ☐ Manual ☐ None ☐ PatchX ☐ QPatch ☐ Quattro

☐ GPCR Validation ☐ Binding ☒ Calcium ☐ cAMP ☐ CNG ☐ None

☐ Parental Cell Line ☐ 1321N1 ☒ CHO ☐ CHO-T(Rex) ☐ HEK ☐ HEK-T(Rex) ☐ RH7777

☒ SRA /sra/sra-instant/reads/ByRun/sra/SRR/SRR304/SRR304976/SRR

☐ Vector

☐ Private No

☐ Volume

☐ Unit of measurement

☐ Threshold

☐ Expiration date

Save Changes Close

Select vial

	Locatio	Box	F	C	Dt	Barcod	Private	Volume	Unit of	Thresh	Expirat	Freeze	Final Pt	Target	Detach	Freezin	IC Vali	GPCR	Parent	SRA	Vector
All														All			All				
1	Rockvill	Box2->	C	5	0	BP1100	No					2013-03	P16	CNG Ta	Trypsin	90% FB	Barracu	Calcium	CHO		
2	Rockvill	Box2->	C	6	0	BP1100	No					2013-03	P16	CNG Ta	Trypsin	90% FB	Barracu	Calcium	CHO		
3	Rockvill	Box2->	C	7	0	BP1100	No					2013-03	P16	CNG Ta	Trypsin	90% FB	Barracu	Calcium	CHO		
4	Rockvill	Box2->	C	8	0	BP1100	No					2013-03	P16	CNG Ta	Trypsin	90% FB	Barracu	Calcium	CHO		

Select the Components at the top of the screen. You are redirected to the Batches tab. Select a batch and press Reset Vials button in the navigation bar. Select SRA field and paste the URL into the SRA field. Press Save Changes.

Freezer Web Access

localhost:8080/fwa/batches?type=3&menuPage=0

Select Batch

Project	Catalog Numb	Batch	Parent Batch	QC Requir	Sample Type	Technician	Date	Documen	Total Vial	Remainin	Shipped
				All	All	All					

Customer Cell Lines

Batch: 1177

Project: Kir2.1-CHO

Catalog Number: CT4127

Added: 2013-03-10 18:04

Technician: Admin

Barcode: BP11000261BX1

Freeze date: 2013-03-08

Final Passage number: P16

Target Family: CNG Target Family

Detachment Solution: Trypsin

Freezing Media: 90% FBS + 10% DMSO

IC Validation: ☒ Barracuda ☐ FLIPR ☐ Manual ☐ None ☐ PatchX ☐ QPatch ☐ Quattro

GPCR Validation: ☐ Binding ☒ Calcium ☐ cAMP ☐ CNG ☐ None

Parental Cell Line: ☐ 1321N1 ☒ CHO ☐ CHO-T(Rex) ☐ HEK ☐ HEK-T(Rex) ☐ RH7777

SRA: /sra/sra-instant/reads/ByRun/sra/SRR/SRR304/SRR304976/SRR304976

Vector:

Private: No

Fields marked with (*) are required

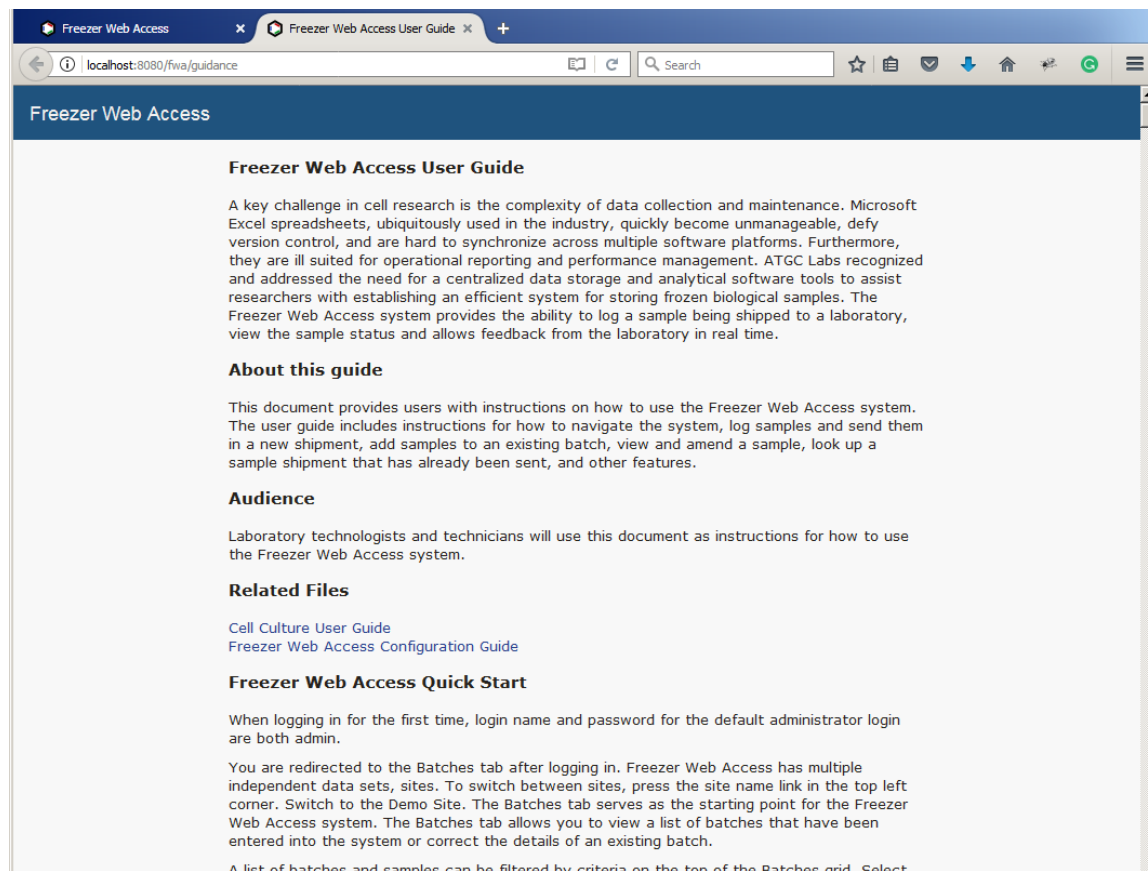
Save Changes Close

Batch	Project	Catalog Numb	Batch	Parent Batch	QC Requir	Sample Type	Technician	Date	Documen	Total Vial	Remainin	Shipped			
11	Rockvill	Box2->D4	0	BP1100	No			2013-03	P16	CNG Ta	Trypsin	90% FB	Barracu	Calcium	CHO

View Sample Edit Sample Sample Activity Show Box Update Vial Information Decrease Volume Documents View 1 - 63 of 63

The system updates the SRA field for all samples in the batch.

A technician can update individual fields. Select a sample, in the sample navigation bar press the Edit Sample button.



For more information please read Freezer Web Access User Guide (Help link, upper right corner).